

Overview

This instruction sheet describes the locations for seal replacement on a 28 High Force Cylinder.

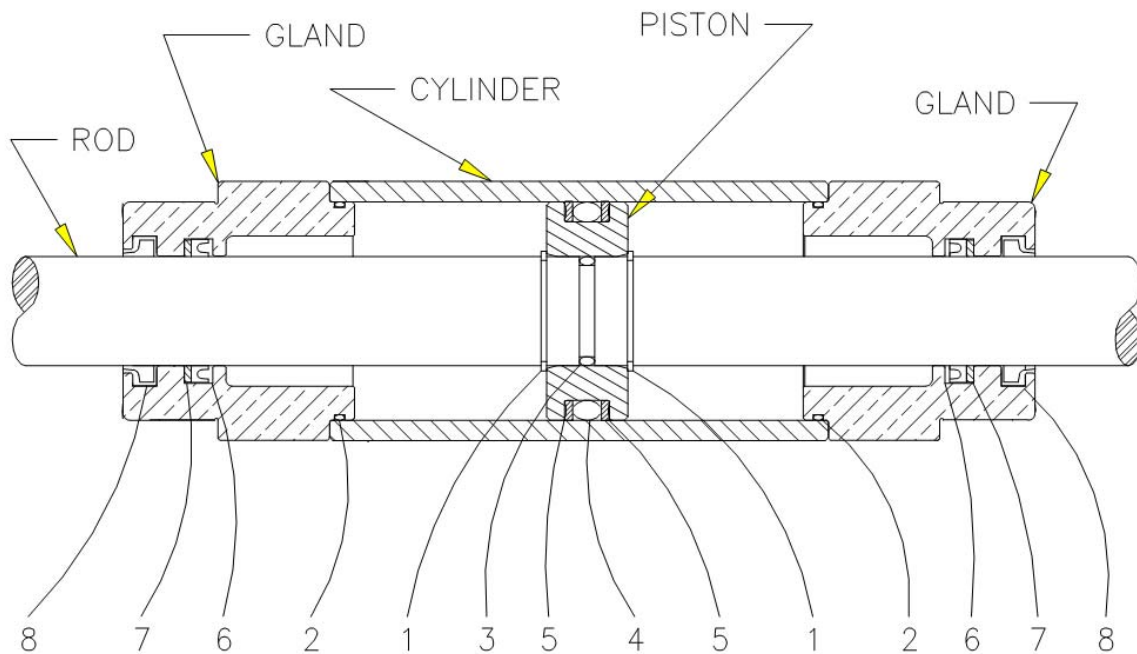
Kit Contains

Qty	Part Number	Description
4	MCB00006	EXT SNAP RING
4	MDL00001	O-RING
2	MDL00002	O-RING
2	MDL00012	O-RING
4	MDL00021	BACK-UP RING
4	MDL00030	SEAL
4	MDL00031	WASHER
4	MDL00032	WIPER

This Instruction Sheet

Procedure:

Install seals with seal cavity oriented as shown in the diagram. Also install washer or backup ring relative to seal as shown in the diagram. Also install wiper with wiper cavity as shown.



INSTRUCTION SHEET REVISION HISTORY LISTING

PART NO: 81100101

DESCRIPTION: 28 HIGH FORCE (STD) SEAL KIT

ORIGINATOR: CHECK: APPRV'D: RELEASED: 6/18/99

<u>CHK/APR</u>	<u>REV</u>	<u>DATE</u>	<u>BY</u>	<u>DESCRIPTION OF REVISION</u>
SRB/JBC	A	8/23/18	RLT	REVISED TO UPDATE SHEETS TO MEET CURRENT McELROY STANDARDS.